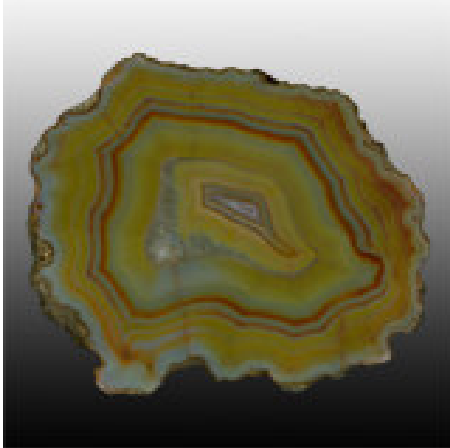


The Rockhound Record

Volume 74, issue 2 Newsletter for the Mineralogical Society of Arizona February 2008

Next MSA Meeting at 7 p.m... Program for February 15, 2008

Joanne Hesterman has a love for agates. She also has a love for painting, calligraphy and the lapidary arts. Her display in the Museum, the 'Agate Family Tree', brings all of these interests of Joanne's together. Next time you have a chance, check it out. She'll discuss the theory on how banded agates form and go over the different classifications and characteristics of agates. She will also bring some specimens for display.



Condor
Agates from
Argentina



MSA Contact Info:

President & Field Trip Coordinator (Club Trips)
Ed Nichols (480) 636-1251

Treasurer and Coalition Field Trip Coordinator:
Betty Deming (602) 242-1553
Email address bd_mac2003@yahoo.com

Newsletter Editor, Secretary and Vice-President:
Positions vacant.
Interested? Contact Ed Nichols.

Mineral Curator: John McLaughlin (623) 979-5246

Librarian/Door Prizes/Hospitality
Bob Holm (623) 247-1325

Refreshments: Lynne Dyer (480) 396-2393

Arizona Dept of Mining & Mineral Resources and the Mining Museum Merging with the AZ Geological Survey

Representative Theresa R. Ulmer of Yuma has introduced HB 2584 on January 17 to merge the Department of Mines and Mineral Resources (DMMR) into the Arizona Geological Survey (AZGS) as a "Division of Mineral Resources." If the bill is approved by the legislature, it is expected to be signed by the Governor, and the merger would become effective December 31, 2008.

While Doug Duffy believes there will be no immediate impact to the Museum itself, the long term impact is unknown. The Dept of Mining and Mineral Research will be greatly impacted. Go to their website <http://www.mines.az.gov/> for their take on this merger. It also lists the names and email addresses and phone #'s of Arizona senate and house members to contact with your concerns, and a link to read HB 2584.



Dues are due !!

Please remit your dues to Treasurer Betty Deming at 2922 W. Claremont, Phoenix, AZ 85017.

Dues: Adults – Single Adults \$12.00,
Juniors (18 yrs. and under) -\$2.50,
Families & Couples - \$20.00

MSA Board of Governors:
Lynne Dyer, Terry Dyer
Bob Holm, K.J. Werner

The Rockhound Record

Volume 74, issue 2 Newsletter for the Mineralogical Society of Arizona February 2008

President's Message By Ed Nichols

We started 2008 with a good MSA meeting Jan 11th with 32 members and visitors in attendance. The following day many people from several valley mineral and prospecting clubs put in valuable work cleaning and sorting at the museum and at the Museum's 12th Ave and Jefferson 'bone yard'.

Our club also needs to do a cleanup and sorting at the club's storage trailer at Marc Watson's place in Glendale, and also at the museum where we store club items. These will be at different times during 2008. I will have a sign up sheet at the Feb. 15th meeting. The date for the cleanup will be discussed and decided at the Feb. Board meeting.

As most of you probably know I cancelled the Lion Springs field trip in Jan. I had several calls from people wanting to go, but nobody had vehicles capable of taking the road into that location.

I hope that all persons on the Spectrum and Prism mine trip found outstanding minerals. Having a diverse number of clubs, that participate in the Coalition of Arizona Rock Clubs, is definitely an asset for all rockhounds in the state.

I didn't receive many suggestions in our box at our January meeting. I'll respond to as many as possible at the February meeting. Please continue to make suggestions.

We still need some club members to volunteer as club officers this year and next. Your time and skills will help our club move forward.

Thanks to all who attended January's meeting.

MSA Field Trip Saturday, February 16th



This will be a field trip to a site north of I-10, west of Phoenix. The road is suitable for any vehicle. It is also an excellent location for kids to enjoy - easy walking & very few cactus. We exit at exit 53 off I-10 & go north on Hovatter Road. Go 2 miles & turn left (west) onto an unmarked gravel road. This is Hull road.

Follow Hull road for 3.1 miles until you see a low ridge of light colored volcanic tuff on the right side of the road. The chalcedony (agate) at this location fluoresces a brilliant emerald green under UV light. There are also small triangular agate pieces here. Larger pieces can be chiseled from the volcanic tuff. This is site 15 in Neil Bearce's excellent new book on Arizona minerals, fossils & fluorescents.

I suggest small garden tools and a rock pick for light digging at this location. We will meet at the Museum at 15th Ave & Washington in the back parking lot at 8am and leave from there at 8:15am. We will make a short gas, snack food, & etc stop at Tonopah, which is about 60 miles west of Phoenix on the south side of I-10. I will have a roster/sign up sheet at the museum & at Tonopah. Those who don't meet at the museum should plan on being at Tonopah before 9:45am.

We will leave for Hovatter road at 9:45 am. If you need info before & during the trip, my cell # is (480) 370-6716

Ed Nichols - Field trip coordinator

The Rockhound Record

Volume 74, issue 2 Newsletter for the Mineralogical Society of Arizona February 2008

Arizona Mineral Collector

2012
FOR
AZ
ARIZONA



By Raymond Grant

The Arizona Department of Mines and Mineral Resources has just published the second edition of the *Checklist of Arizona Minerals*. (The first edition of the Checklist was published by the Mineralogical Society of Arizona in 1982.) It is available at the Museum or by mail and the cost is \$15. It is an update for the *Mineralogy of Arizona* published in 1995.

Since 1995, 62 additional minerals have been found in Arizona. Some were missed in the literature search for the 1995 work, but most are minerals from collectors having material they found identified. Of the 62 minerals, six are type minerals with the locality in Arizona (see Arizona Mineral Collector – Number 101).

Also, since 1995 some minerals have been discredited or taken off the official list. These were determined to be mixtures, some other mineral, or lacking in enough data to meet the requirements for an official mineral. A few minerals have had a name change.

This checklist is an attempt to make all the above changes to the Arizona mineral list. There are 864 mineral species reported from Arizona. They are all listed in the Checklist with their chemical formula. For the 62 additional minerals a brief description of where they were found is given. Additional locality information is given for minerals where only one known

locality was reported in 1995. A separate list of the Arizona type minerals with a brief description is given as an appendix, and a short description is given of doubtful and discredited Arizona minerals in another appendix.

There are plans that the Tucson mineral show in 2012 will feature Arizona minerals to mark the centennial of Arizona statehood. A new edition of the *Mineralogy of Arizona* is a goal for that show. If you have information about Arizona minerals or Arizona localities that was not in the 1995 edition please send it to me at raycyn@cox.net.



Some of the new edition's added minerals

Not sure that I want to add this one to my collection

BRUSHITE

Calcium hydrogen phosphate hydrate, $\text{CaHPO}_4 \cdot 2\text{H}_2\text{O}$. Found as a cave mineral forming from organic material such as bat guano. *Cochise County*: found at Kartchner Caverns south of Benson. In the Big Room it forms large masses over 2 m long, 0.3 m wide and 6 cm thick. It is forming from solutions beneath a fresh bat guano pile (Hill, 1999).

It is believed to be precursor of apatite and is formed by the interaction of guano with calcite and clay at a low pH.

Also found in Kartchner Caverns.....

RECTORITE

A clay mineral, 1:1 regular interstratification of a dioctahedral mica and a trioctahedral smectite. *Cochise County*: from Kartchner Caverns south of Benson (Hill, 1999).

The Rockhound Record

Volume 74, issue 2 Newsletter for the Mineralogical Society of Arizona February 2008

What's Happening?

January - February, 2008 Quartzsite Desert Gardens Intl. Gem & Mineral Show
1155 Kuehn Street, ¼ mile east of exit 17
Hours: 9-6 Admission and parking: Free

January/February

For a listing of the satellite Tucson shows that run from January 26 through February 17, 2008:

www.tucsonshowguide.com or

www.VisitTucson.org

February 8-10, 2008 Wickenburg Annual Gem & Mineral Show, Wickenburg Community Center, 160 N. Valentine.
www.wickenburgchamber.com
Hours: Fri., Sat. 9-5, Sun. 10-4
Admission and parking: Free

February 14-17, 2008 Tucson Tucson Gem and Mineral Show™, Convention Center, 260 S. Church St.
www.tgms.org E-mail: tgms@tgms.org
Sponsor: Tucson Gem & Mineral Society
Hours: Thurs. - Sat. 10-6, Sun. 10-5
Free Parking /Admission: \$9.00, 14 and under free with adult

February 15, 2008 MSA Club Meeting at 7 p.m.
At the Arizona Mining & Mineral Museum

February 16, 2008 MSA field trip – see page 2

February 23, 2008 Phoenix Prospectors' Day, Arizona Mining & Mineral Museum 1502 W. Washington in downtown Phoenix - Gold panning demos, activities for children.
Sponsors: Arizona Mining & Mineral Museum, Arizona Prospectors Association, and Maricopa Lapidary Society Hours: 10-4

February 23-24, 2008 Mesa

Apache Junction Rock & Gem Club, Inc., Skyline High School, 845 S. Crismon Rd., Mesa, AZ 85208. Hours: Sat. 9-5, Sun. 10-4
Admission: \$3.00 donation

March 14, 2008 MSA Club Meeting at 7 p.m.
At the Arizona Mining & Mineral Museum

March 22-23, 2008 Cottonwood

Verde Valley Gem and Mineral Show & Jewelry Show, Mingus Union High School, 1801 E. Fir St., Cottonwood, AZ 86326

www.mingusclub.org. Sponsored by: Mingus Gem and Mineral Club. Hours: Fri., Sat. 9-5, Sun. 10-4
Admission: \$3:00, children free with adult

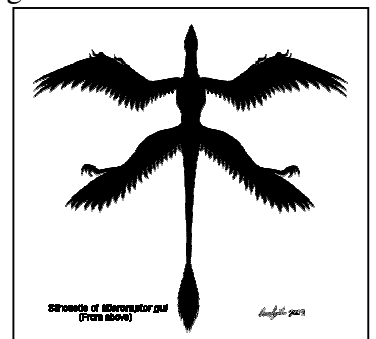


There is no Coalition field trip for February.



Feathered Dinosaurs and the Origin of Flight, an exhibition at the **Arizona Museum of Natural History** at 53 N. MacDonald (1 block north of Main Street in downtown Mesa) from **March 1, 2008 – Sept. 28, 2008** presents exciting evidence from remarkable Chinese fossils that are bringing new answers to the on-going debate about the relationship between dinosaurs and birds, as well as how they evolved the ability to fly.

The exhibit is a rare opportunity to see a collection of 35 fossils on loan from China. These fossils reveal a new understanding of how birds are related to dinosaurs. Also on display are many life-size recreations that demonstrate startling changes in how dinosaurs have been portrayed over the years.



The Rockhound Record

Volume 74, issue 2 Newsletter for the Mineralogical Society of Arizona February 2008

SOLVE THE PUZZLE TO WIN A PRIZE AT THE NEXT MEETING.

One for juniors and one for adults.

COPPER MINERALS

AURICHALCITE
AZURITE
BOOTHITE
BROCHANTITE
CHALCOCITE
CHRYSOCOLLA
COPPER
CUPRITE
DIOPTASE
DJURLEITE
EPIDOTE
FLUORITE
GOLD
KINOITE
LINARITE
MALACHITE
MIXITE
PYRITE
ROSASITE
SHATTUCKITE

T	W	A	L	V	E	T	O	D	I	P	E	E	O	R
E	U	B	R	O	C	H	I	A	N	T	I	T	E	O
A	E	B	Y	R	O	S	A	S	I	T	E	I	C	S
M	T	P	E	E	T	C	E	C	S	E	E	Y	I	A
A	I	R	D	P	G	O	L	I	T	T	E	L	E	D
L	X	E	L	P	E	A	L	I	I	E	T	T	J	E
D	I	G	I	O	H	V	R	K	T	E	I	U	E	T
I	M	I	N	C	E	Y	C	I	R	H	R	E	T	I
O	E	T	I	R	P	U	C	N	T	L	O	T	I	H
P	V	R	T	E	T	O	E	O	E	F	N	I	E	C
T	U	C	E	T	C	T	O	I	I	U	E	R	R	A
A	K	O	A	L	W	B	T	T	Y	D	T	O	U	L
S	I	H	A	R	F	E	S	E	T	L	S	U	Z	A
E	S	H	C	H	R	Y	S	O	C	O	L	L	A	M
C	C	E	T	I	R	A	N	I	L	G	V	F	S	A

TIEBREAKERS

1. Find the mine that you can find all of these minerals.
2. Name four crystal shapes for copper.

SILVER

TENORITE

WULFENITE

YEDLINITE

This puzzle was created by MSA member Gilbert Flores. All completed puzzles that are turned in at the meeting will be put into two boxes. One for adults and one for juniors. One will be pulled out of each box. The winners will each win a "Minerals of the World" tshirt featuring photographs taken by Jeff Scovil, MSA member and mineral photographer extraordinaire. **Be sure to put your name on your puzzle before putting it in the box!**

Want to order one of these tshirts? Go to this website and type in "rocks" in the search box: www.easystreetmarkets.com, or contact them via phone at (850) 671-3080 or write them at : Easy Street Markets P.O. Box 12372, Gainesville, FL 32604-0372



The Rockhound Record

Volume 74, issue 2 Newsletter for the Mineralogical Society of Arizona February 2008

2008 TUCSON GEM & MINERAL SHOW™

Seminar Schedule – free and open to the public at the Tucson Convention Center

CB: Crystal Ballroom **TB:** Turquoise Ballroom

Thursday, February 14th

1:00 pm - 3:00 pm **(TB)** Mineral Photography Seminar - Jeff Scovil

2:00 pm - 3:00 pm **(CB)** Society of Mineral Museum Professionals Board Meeting

3:00 pm - 4:00 pm **(CB)** Society of Mineral Museum Professionals Membership Meeting

4:00 pm - 5:30 pm **(CB)** Society of Mineral Museum Professionals Program

3:30 pm – 4:30 pm **(TB)** “Emerald Crystal Pockets of the Hiddenite District, Alexander County, North Carolina” - Ed Speer, Geologist

Friday, February 15th

9:30 am - 6:00 pm **(TB)** Arthur Roe Memorial Micromount Symposium

9:30 am - 10:00 am **(TB)** Welcome & Scope Setup

10:00 am - 11:30 am **(TB)**

First Session Symposium Talks:

“Microminerals of Maine, New Hampshire, and Vermont” - Van King

“Collecting in the Vicinity of Diamond Lake, Oregon” - Doug Merson

11:30 am - 12:30 pm **(TB)** Break and Socializing

12:30 pm - 2:00 pm **(TB)**

Second Session Symposium Talks:

“RRUFF Project” - Dr. Bob Downes

“Mineralogy of the Indian Mountain, Cherokee County, Alabama Iron Mining District” -Dr. Henry Barwood

2:00 pm - 6:00 pm **(TB)**

“Freebie” Tables, Socializing, Specimen Trading

2:00 pm -3:00 pm **(CB)**

“Michigan’s Copper Country” - Marc Wilson

3:30 pm - 5:30 pm **(CB)** Geo-Literary Society

“George Frederick Kunz’s Contributions to the Gem and Mineral Literature of the U.S.”

Saturday, February 16th

10:00 am – 1:00 pm **(CB)**

29th Annual FM-TGMS-MSA Mineralogical Symposium

“Minerals of the USA”

10:00 a.m. Introductory Remarks Symposium Co-Chairs - Julian C. Gray and Robert B. Cook

10:05 a.m. “Arkansas Quartz Crystals - The Leitmotif of Quartz Morphology For Collectors”
Si Frazier

10:25 a.m. “Crater of Diamonds State Park, Arkansas – an Overlooked Treasure” - J. Michael Howard

10:45 a.m. “Elmwood Zinc Mine, Carthage Tennessee” - Steve Neely

11:05 a.m. “Vibrant Orange Orpiment Crystals from the Twin Creeks Mine, Humboldt County, Nevada” - Scott Kleine

11:25 a.m. “Bisbee, Arizona: The “Classic” American mineral locality” -Richard W. Graeme

11:45 a.m. “The Mammoth-St. Anthony Mine, Tiger, Arizona” - Les Presmyk

12:05 p.m. Lunch

1:05 p.m. “The Gem and Rare Element Pegmatites of Southern California” - Jesse Fisher

1:25 p.m. “The Benitoite Gem Mine: Past, Present and Future” - Richard Kennedy

1:45 p.m. “Iridescent and other Fluorites from the Findlay Arch, Ohio” -John Medici & John Rakovan

2:05 p.m. “Minerals and History of the Red Cloud mine, Arizona” - Garth Bricker

2:25 p.m. “Amethyst Scepters, Ashaway Village, Hopkinton, R.I.” - John Rakovan & Sal Avella

2:45 p.m. “The Mount Antero Mineral Locality, Chaffee County, Colorado: A collecting History”
Mark I. Jacobson

3:05 p.m. “Emerald Crystal Pockets - Hiddenite District, Alexander County, N. Carolina” - Ed Speer

3:25 p.m. “Mineralogy of the Gem-Bearing Alpine-Type Quartz Veins from Hiddenite, North Carolina.”
Michael A. Wise

3:45 p.m. “What is the “most important” mineral locality in the U.S.?” -Peter J. Modreski

11:00 am - 12 noon **(TB)** “Franklin, Sterling Hill, New Jersey, Past, Present and Future” -Dick Hauck

2:00 pm - 3:00 pm **(TB)**

“A Historic Perspective of Bisbee and it’s Minerals”
Richard W. Graeme

3:30 pm - 5:00 pm **(TB)**

“Patuxent River Agate, America’s Newest State Gemstone” - Courtland Lee

The Rockhound Record

Volume 74, issue 2 Newsletter for the Mineralogical Society of Arizona February 2008

What can the MSA do to support the Arizona Mining & Mineral Museum?

Charlie Connell from the Friends of the Museum will be at our February meeting to talk about some of the Museum's plans and the funds needed to see them become reality.

In the past, the MSA has supported the Museum, but have we done enough? Below is what some of the other clubs have contributed to the Museum, and also what the MSA has contributed.

This list doesn't include non-monetary contributions. Did you know that the AZ Prospectors Assoc has a "Monday Crew" that each Monday does needed repairs and maintenance at the Museum?

It is time that we ask ourselves "What can we do as the MSA to support the Museum who supports us by providing us a home for our meetings? That displays our club flyers? That supports the rockhound and mineral collecting community that we are all a part of?" The MSA has funds that could be used to help fund one of the Museum's projects. Now that the MSA no longer has its own show, and newsletter costs are down due to emailing the newsletter, can we donate some of these funds to the Museum?



This listing of club donations to the Museum is provided by the Friends of the Museum :

Leaverites: Mardell Zimmermann

- Joins the Friends on an annual Club Membership @ \$250.
- Donates \$1,000 to 1,300 annually from the sales of Egg Cartons to the Museum.
- Some of the exhibits they have supported include purchasing gem holders, minerals and maintaining the micromount exhibit.

- One of the chief supporters of education in the Museum including purchasing materials for the teacher kits
- Established and maintains the black light display for the museum at a cost of over \$4,000.
- Plans to donate a large sum for a special children's exhibit.

Maricopa Lapidary Society, Ann Baker

- Donated \$2500 to FAMMM for lighting in the Copper Gallery and for new cases for the store (below) and for future case purchase in the Museum
- Newer store display cases "all glass" \$230
- HP Printer for the Curator's office \$500
- TV & Stand for classroom \$1,500
- Additional cases in the gift store \$900
- Teacher kit support \$1,500
- Kids Corner \$200
- Paid for volunteers lunch at Feb.Family Day

Ariz. Prospectors Association: Charlie Connell

- Have purchased 2 annual Club Memberships for FAMMM at \$250 each
- Have contributed for the past 10 years between \$400 to approximately \$730 **each year (amount varies)** to the Museum.
- Above annual giving has been designated to the following...some several times...outside exhibits, exhibits (such as mineral purchase), lapidary workshop, carpenter shop, Copper Gallery etc.

Mineralogical Society of Arizona

- Has contributed \$500 for the past three years to FAMMM for a Business Membership

Other Clubs: (partial listing)

A \$250 club membership from Mingus Rock and Mineral Club-Cottonwood.

\$1000 from the Wickenburg Rock and Gem Club for the Copper Gallery.

The Rockhound Record

Volume 74, issue 2 Newsletter for the Mineralogical Society of Arizona February 2008

We're head'en to --- "AGATE RENDEZVOUS 2008" August 23rd to Sept. 1st 2008

Chaparral Rockhounds of Roswell, NM is hosting Agate Rendezvous 2008 which is co-sponsored by the Rocky Mountain Rockhounds and is free & open to all Rockhounds. It is an annual ten-day, nine-night fieldtrip campout through the Labor Day weekend held at Apache Creek, New Mexico. This year, it is an Inter-Federation Fieldtrip Event. If you plan on coming, please RSVP NLT August 20th. To RSVP, or ask questions about the Rendezvous, please contact Yonis Lone Eagle, RMFMS Vice President & New Mexico/Texas State Director at 505-860-2455 or via e-mail at: rockymountainrockhounds@yahoo.com.

We have very adventurous and interesting fieldtrips every day from 50 to 200 miles roundtrip from base camp. Each day we leave at 8:30 AM to different areas to collect a very wide variety of material that includes: agate, banded agate, blood stone, chalcedony, crystalline, flat band agate, geodes, golden luna agate, hematite, jasper, lava's, luna blue agate, obsidian, plume agate, quartz crystals, red luna agate, snowflake agate and thunder eggs just to name only a few. Several fieldtrips will need high-clearance or 4WD. If you do not have this type of vehicle, don't worry, someone would be happy to carpool with a little "\$\$\$\$" help for gas.

The small town of Apache Creek is located in the central-western part of New Mexico about 117 miles west of Socorro on NM-12. Apache Creek campground, our base camp, was once a CCC Camp back in the 1930's. It is a beautiful and tranquil camping area with tall majestic pine trees for plenty of cool shade during the warm days of August. The area is large and spacious enough for the largest of RV's to the smallest of pup tents. Being a rustic camp area, there are no facilities, water or electricity, just one coed chemical toilet, so come prepared. There are no camping fees at this campground.

The town of Apache Creek has one main structure in town, a small country store where one can buy the "very basics" and is where we get our spring water and take showers.

The small town of Reserve is 11 miles s.w. and has a grocery store, bank /ATM, garage/gas station and a small motel for anyone not wanting to campout. The majority of the time, Mother Nature cooperates. The weather in August has warm days in the upper 70's to 80's and cool nights in the 50's with some possible 40's and even 30's. Occasionally, late summer thundershowers may wander through the area to put a damper on things, so come prepared for the unexpected. The elevation of our base camp is about 6400' with day outings that can be up to 8500-9000'.

On both Saturday afternoons after returning to camp, we'll get together for our traditional "Apache Creek Group Photo" at 5:30 PM. Afterwards, get ready for our traditional potluck supper at 6:00 PM. Everyone makes their favorite camp dish and we share them while telling more stories around the campfire.

We've averaged about 40 Rockhounds attending the last 10 years, from at least half a dozen states. Just the right size for a Rockhound get together. And folks, if you have any good unique swapping/trading material from your area, be sure to bring it. And in addition, if you have a CB Radio, be sure to bring it along. We use CB Channel 7 on all our fieldtrips. When you arrive at the campground, just look for the "White Framed Canopy", that's our HQ.

Lodging: If you don't wish to camp out, or need electricity and water for your RV, there are the following alternatives. Be sure to make any reservations as early as possible due to Bow Hunting season for Elk, which starts on Monday the 1st. The rooms and RV spaces fill up fast.

The Bunk House Bed & Breakfast in Apache Creek is 505-533-6949.

Apache Creek RV located in nearby Cruville is 505-533-6166. They have a Dump Station, Laundry, Propane & Showers.

Rode Inn Motel on Main Street in Reserve is 505-533-6661. They have Cable TV, Direct Dial Phones, Queen Beds and a Laundromat.

Dining: For those folks who wish to have a change of diet from camp food, there are the following alternatives: BBQ Restaurant in Reserve
Ella's Café in Reserve
Little Adobe Café in Rancho Grande

(continued on next page.....)

The Rockhound Record

Volume 74, issue 2 Newsletter for the Mineralogical Society of Arizona February 2008

Agate Rendezvous 2008

Schedule of Fieldtrip Events

Depending on how many rockhounds attend, field trips may be split into 2 different ones a day, with 2 different sign-up sheets each evening.

Fri. the 22nd: Arrive and set up camp and sign-in.

Sat. the 23rd: Green and purple Fluorite near Gila, NM. Rock shop in Glenwood, NM. (New location) Potluck supper at 6pm back at camp.

Sun. the 24th: Agate, purple Bloodstone, Jasper & Petrified Wood near Red Hill, NM. (Old location)

Mon. the 25th: Golden Luna and White Banded Agate north of Luna, NM. (Old & new locations) Group supper at the Little Adobe Café in Rancho Grande at 5pm.

Tue. the 26th: Luna Blue Agate near Luna, NM. (Old & new locations)

Wed. the 27th: Multi-colored, flat-banded & snowflake Agate and Crystals near Turkey Park. (Old & new locations)

Thur. the 28th: Red Agate, Obsidian & Petrified Wood. Group supper at the BBQ Café in Reserve.

Fri. the 29th: Mogollon Ghost Town and Obsidian.

Sat. the 30th: Open day, Open Tail-Gate Rock Swap at Catron County Fair grounds in support of local Rock Show. Pot-luck supper at camp at 6pm.

Sun the 31st: Open day, collect where you want. Group supper at Ella's Café in Reserve at 5pm.

Mon. the 1st: Pack up camp and head for home.

Donato, Bob Holm, Ed Nichols, Lois Splendoria, Betty Deming, Sally Fiske, Shirley Fiske, and more. Good turnout folks !!!

Leo Langland, a geologist who joined the MSA in 1966, gave a presentation on the Green River Formation in s.w. Wyoming that contains fossils – most notably the fish fossils for which it is famous. The fossil bearing layer is only 18 inches in depth and was formed in a lake bed over 50 MYA. While collecting is not allowed in the National Park, there are 3 to 4 private claims (fee sites) at which you can collect.

Leo showed a video produced by the National Park Service, and afterwards told about his field trip there with his family. His daughter-in-law found a slab that contained more than 20 fish. While he didn't give that specimen away, he did bring other specimens which were used as door prizes (in addition to our other door prizes). A big thanks to Leo for his generosity in bringing these specimens to share with us.

Our meeting wrapped up with goodies and visiting a bit shy of 9:00 p.m. For once we were done on time & the Museum didn't have to kick us out the door !!!

Minutes from the MSA's January 11th Meeting

There were 32 members and visitors at our January meeting.

This was Ed Nichol's first meeting to host as club president, but you wouldn't know it from his cool demeanor. He didn't faint, he didn't stammer and he looked us in the eye. Not that we are a very rough audience. There were only a few catcalls and the regular hecklers.

Betty Deming thanked those who volunteered at the Flag show, which included Gabrielle

ASU's Mineral & Meteorite Displays

[Robert S. Dietz Museum of Geology](#)

Arizona State University. Includes mineral displays as well as vertebrate fossils, a Foucault pendulum, and a working seismograph. Free admission.

Monday through Friday, 9:00 am - 12:00 noon.

Located in ASU's Physical Sciences Complex, F-Wing. Phone: 480-965-7065

[Center for Meteorite Studies](#)

Arizona State University. The Center for Meteorite Studies is home to the world's largest university-based meteorite collection. Free admission. Monday through Friday, 9 am - 5 p.m. Located in ASU's Physical Sciences Complex, C-wing, room 139.

The Rockhound Record

Volume 74, issue 2 Newsletter for the Mineralogical Society of Arizona February 2008



www.azminerals.com

Mineralogical Society
of Arizona,
A Non Profit
Organization Founded
1935

Purpose: To promote popular interest in the various Earth Sciences, and particularly the fields of Geology, Lapidary, Mineralogy, and related subjects. ID badges are available from the Treasurer.

Meetings: 7:00 p.m. at the Arizona Mining and Mineral Museum, 1502 W. Washington, Phoenix, AZ, *on the second Friday of the month, September through June (except February, which is the third Friday).*

Dues: Adults – Single Adults \$12.00, Juniors (18 yrs. and under) -\$2.50, Families & Couples - \$20.00. **Mail dues to Betty Deming at 2922 W. Claremont, Phoenix, AZ 85017**

The Mineralogical Society of Arizona is a member of:



**American Federation of Mineral Societies,
and the Rocky Mountain Federation of
Mineral Societies**

**EXCHANGE EDITORS: P l e a s e s e n d a l l
newsletters to the return address listed
above.**

Newsletter: Reprinting permission granted with proper credit given. Unless otherwise noted, articles are written by the Editor.