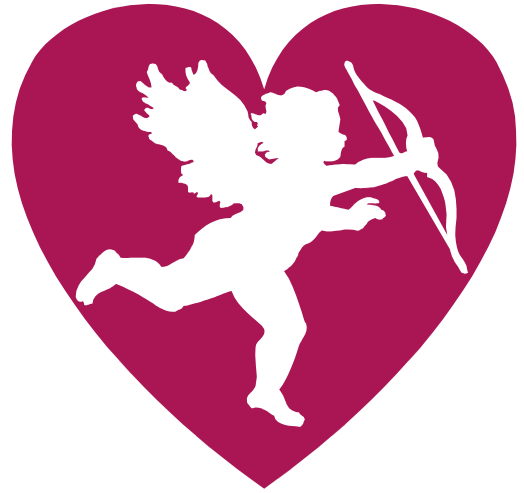


February 2012 - Volume 78, Issue 2

The Rockhound Record

Mineralogical Society of Arizona

www.mineralogicalsocietyarizona.org



MEETING LOCATION:

Church of the Beatitudes, 555 W. Glendale Ave., Phoenix, AZ, 85021

Upcoming Program

**Thursday, February 9, 2012
7:00 p.m.**

An overview of the 2012 Tucson Gem and Mineral Show, the theme is "Arizona Minerals" and there will be outstanding exhibits of specimens from Arizona. Photographs of the best exhibits will be shown and members can still go to Tucson on Friday, Saturday, or Sunday to see the show.



Mangano
Calcite

Photograph
By
Liz
Anderson

Bring A Mineral Specimen

Chris Whitney-Smith has suggested that members bring in minerals they would like to share with the club and those minerals they need help identifying. So for the February meeting, if you have something for show and tell, bring it to the meeting.

Ray Grant



President's Message

In December of 1975 I was elected president of the MSA, and now 37 years later I am president once more. I have matured a bit (My wife won't let me say I got old.) A lot has happened over all those years, I taught geology at Mesa Community College for 31 years, I have retired and been busier than ever, I co-authored the Mineralogy of Arizona and I am working on a new edition, I have been active in the Flagg Mineral Foundation where I organized the Flagg Gem and Mineral Show for 26 years and co-chaired the Minerals of Arizona Symposium for 20 years (The 20th annual symposium will be this April.). Life goes speeding by.

When I first became president in 1975, the MSA met twice a month on the first and third Fridays. It was very difficult to get one good program a month let alone two. Some of the meetings were deadly. So one of the first things I did was get the board to reduce the meetings to one a month—a big change after 40 years. But we were able to do a better job at getting good programs.

The MSA was started by Arthur Flagg in 1935 and has a long history in Arizona. Over the years the officers and members of this club reads like a who's who of Phoenix area mineral collectors. The closing of the Mineral Museum presented a big problem for all the clubs that met there. Thanks to the many people who have worked very hard to keep the MSA alive.

At present there are three things that this club does: it has a monthly newsletter that ties all the members together, there is a monthly program, and most months a field trip. Recently it has become harder and harder to get good field trips because many places are closed or gone and liability problems have made many other areas unavailable. Where can we take 20 to 30 people and they can all find something good? To me organizing field trips is one of the biggest challenges the MSA has.

So, if you have any ideas for club activities, for field trips or anything else we can do to make the MSA better, please let me know.

Ray Grant

FROM THE EDITOR: On the following page is a questionnaire that Ray Grant presented at our June 2011 meeting. MSA would appreciate having your input. Please fill out and either e-mail to Ray Grant at raycyn@cox.net, or send to him at the **club's new official Post Office Box address:**

**MINERALOGICAL SOCIETY OF ARIZONA
P.O. BOX 30031
Mesa, AZ 85275-0031**

Mineralogical Society of Arizona Member Questionnaire

1. What do you expect from this club, what can the club do for you?

2. What can you do for the club; what skills or interests do you have that can contribute to the success of the group?

3. Check any of the following that you would like to see the club have:
 - a. Monthly meeting with a speaker ___
 - b. Monthly field trip ___
 - c. Longer field trips (perhaps a week) ___
 - d. Annual Mineral Show ___
 - e. Classes related to mineralogy ___
 - f. Social activities like potlucks ___
 - g. List any other possible activities

Optional:

Name _____

Email _____

Phone _____

COALITION FIELD TRIP

SATURDAY, FEBRUARY 18

**Hosted by The Mingus Gem & Mineral Club
To Collect Siderite at the Copper Chief Mine**

Meeting Time: 10:00 a.m.

Meeting Place: Dirt Lot across from the Maverick Gas Station located on the corner of Hwy 89 W and West Mingus Avenue in Cottonwood, AZ.

Vehicle Requirements: High Clearance

Parking: Very limited - PLEASE carpool

Reference: Minerals, Fossils, and Fluorescents of Arizona; A Field Guide for Collectors by Neil Bearce - Site 25. We will be visiting the old mine dump - Root beer colored siderite and various interesting examples of other minerals. Please arrive on time. It is a 20-25 minute drive from meeting location on dirt road to collecting site.

Trip Leader: Sarah Knowles - 928-282-0074 (home) or 928-203-6250 (cell phone on before and during trip only)

PLEASE RSVP!

General Meeting Minutes - January 12, 2012

The meeting was called to order by Ed Nichols, vice president for 2011. After the Pledge of Allegiance, visitors were welcomed.

Paul Flores, representative for the Nominating Committee, announced the nominees: President - Ray Grant; Vice President - Ed Nichols; Treasurer - Lynne Dyer; Secretary - Mary Parsons. Nomination from the floor: Betty Deming for Treasurer; the nomination was seconded. There were no further nominations, so nominations were closed. Betty Deming gave a brief speech, then voting commenced. All voted to elect the nominees as listed into office, with the exception of Treasurer. A paper ballot vote was held for Treasurer. Votes for Treasurer were tallied and results were 16 votes for Lynne; 11 votes for Betty. The results were announced. Ray Grant thanked Betty for her work.

Betty gave the Treasurer's report: Balance as of 12/31/2011 was \$3,775.64. Ray Grant announced that there will be no Coalition field trip in January, since the group responsible for that trip has withdrawn their Coalition membership. New members were welcomed: Terry Ullery, Glenn Cook & Linda Watson, Sarah Rosengren & Lucy Dorn, and Richard & Sharon Brundige.

Other Business: The Earth Science Museum needs volunteers, especially those with marketing, sales, or science backgrounds.

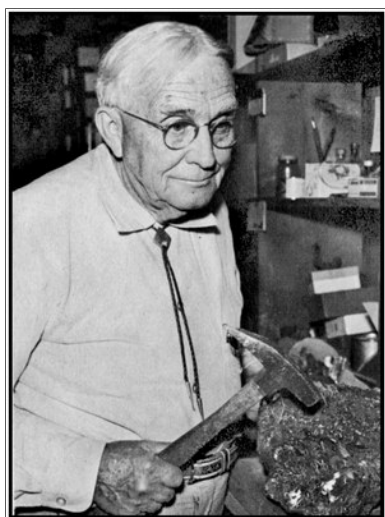
Program for the evening was presented by Ray Grant: The Story of Opal. The raffle was conducted, and the meeting was adjourned.

Respectfully submitted,
Mary Parsons, Secretary

ARIZONA MINERAL COLLECTOR NUMBER 145



By Dr. Raymond Grant



Arthur L. Flagg

A new book, *Collecting Arizona*, will make its debut at the Tucson Mineral Show this year. The following is the dedication for the book: "This book is dedicated to "Mr. Rockhound" ARTHUR L. FLAGG. The first curator of the Arizona Mineral Museum, Flagg mentored untold numbers of Arizona collectors with patience and a philanthropic spirit."

Arthur Flagg started the Mineralogical Society of Arizona, and he was president for the first 15 years. Unfortunately, he had passed away by the time I moved to Arizona, so I never got to meet him. He did write two books, the first was ***Rockhounds and Arizona Minerals*** in 1944. This book is about how to become a rockhound with topics like what to collect, where to collect, how to collect, and some identification procedures. It has only

very limited information relating to collecting in Arizona. There is a final chapter called Mineral Societies that tells about starting a club. His concluding statement in the chapter and the book is, "Pleasure and profit are bound to accrue from your society activities in which individual members will share in proportion as they contribute." (This is a not too subtle hint on my part for MSA members to step up and get involved.)

His second book is ***Mineralogical Journeys in Arizona***, and in this book he has lots of suggestions of localities for collectors. Some are specific such as "Near Kelvin is the Esperanza or Sullivan mine (Sec. 3, R 14 E., Tp. 3 S.) where vanadinite and mediocre wulfenite may be collected." I don't know anything about this locality, but who knows. Some of his other localities seem to be hints at places for you to look, but he is making the search part of the adventure. For example: "approximately four miles north of Dagoon are veins with wolframite, hubernite and some scheelite. From one prospect showing slender quartz crystals, fairly clear, there are cream colored crystals of scheelite deeply embedded in the quartz." This is not too specific, but would be great to find. Copies of both books can be found on occasion.

SCENES FROM THE FLAGG SHOW'S MSA ROCK ROULETTE WHEEL



Book Winner with Ray Grant



MSA Wheel Winner

**Thank You to Chris Whitney-Smith
For These Pictures!**



**From Left to Right
Behind Table:
Bob Holm, Bob
Hendrix, Ed Nichols,
& Maria Nichols
On Far Right**



**From Left to Right
Behind Table:
Bob Holm, Julie
Massey, & Dave Lay**



**One of Our Hopeful
(and probably repeat)
Customers**

MINERALS, GEMSTONES, GOLD, HISTORY

The 33rd Tucson Mineralogical Symposium sponsored by the Friends of Mineralogy, the Tucson Gem and Mineral Society and the Mineralogical Society of America will be held on Saturday, February 11, 2012 at the Tucson Convention Center. Admission is free and everyone is welcome. *Minerals of Arizona* is the theme of the 2012 Tucson Show and the subject of the symposium. Arizona became a state in 1912 and statewide celebrations of the Centennial are planned in 2012. The Tucson Show theme and the symposium are a part of this anniversary celebration.

**33rd Annual FM-TGMS-MSA
Mineralogical Symposium
The Minerals of Arizona
10 a.m. to 4 p.m. - Saturday, February 11, 2012
Crystal Ballroom, Tucson Convention Center**

Program

- 10:00 - 10:10 - Welcoming Remarks and Introductions – Symposium co-chairs, Julian Gray and Raymond Grant
- 10:10 – 10:30 – The Mineralogy of Arizona: Past, Present, and Future - Marcus Origlieri and Raymond Grant
- 10:30 – 11:00 - History and Development of Mining in Arizona before Statehood (1912) – Jim McGlasson
- 11:00 – 11:30 - How Minerals from Bisbee helped Arizona gain Statehood – Richard Graeme
- 11:30 – 12:00 - Gemstones of Arizona – Wolfgang Mueller

- 12:00 – 1:30 - **Lunch Break**

- 1:30 – 2:00 – Mines and Minerals of the Amole District, Tucson Mountains, Pima County, Arizona – Anna Domitrovic
- 2:00 – 2:30 – Tombstone...The Town too Tough to Die...Shady Ladies, Shootouts and Tellurium Minerals – Peter Megaw
- 2:30 – 3:00 – 150 years of mining, 100 years of Statehood, 50 years collecting Arizona - Les Presmyk
- 3:30 – 4:00 - Arizona Gold – Erik Melchiorre

REMINDER: Remember to tune in to ABC15 News on Monday, February 13, 2012, at 10:00 p.m. for the story on the Mineral Museum.

2012 Officers and Committees

PRESIDENT

Ray Grant
(480) 814-9086
raycyn@cox.net

VICE PRESIDENT

Ed Nichols
(480) 636-1251
epidote555@yahoo.com

TREASURER

Lynne Dyer
(480) 396-2393
unodyers@hotmail.com

SECRETARY

Mary Parsons
(602) 502-6702
relocated1999@yahoo.com

NEWSLETTER EDITOR

Lois Splendoria
lois.splendoria@gmail.com

COALITION FIELD TRIPS

Betty Deming
(602) 242-1553
azrockhound02@yahoo.com

***CLUB FIELD TRIPS
OPEN***

***MINERAL CURATOR /
LIBRARIAN / DOOR PRIZES /
HOSPITALITY***

Bob Holm
(623) 247-1325

REFRESHMENTS

Lynne Dyer
(480) 396-2393
unodyers@hotmail.com

STATUTORY AGENT

Terry Dyer
(480) 396-2393
unodyers@hotmail.com

WEBMASTER

Patti Polk
rockhound_86326@yahoo.com

***BOARD OF
GOVERNORS***

Lois Splendoria (2012)
Terry Dyer (2012)
Bob Holm (2013)
David Lay (2013)
Chris Whitney-Smith (2014)
Charles Krog (2014)

WELCOME NEW MEMBERS!

Terry Ullery - Phoenix, AZ

Joined December 2011

***Richard & Sharon Brundige
Goodyear, AZ***

***Ken & Lori Murray
& Kelli and Abby
Mesa, AZ***

***John Weide, Dayton Weide,
Jazlyn Tyler, & Liza James
Gilbert, AZ***

***Laryssa Kachorowsky
Phoenix, AZ***

***Roger & Faith Roseberry
Glendale, AZ***

Joined January 2012

ROCK SHOWS - FEBRUARY 2012

January 1 - February 28, 2011 - Quartzsite

Desert Gardens Intl. Rock & Gem Show

P. O. Box 2818, Quartzsite, AZ, 85346
1155 Kuehn Street, ¼ mile east of exit 17
Hours: 9-6. Admission and parking: Free
Dealers Contact: Sandi McAllister,
928-927-6361

Website: www.desertgardensrvpark.net

E-mail: dggemshow@ureach.com

January 27 - February 12

2011 Tucson 22nd Street Mineral, Fossil & Gem Show

600 22nd St. & I-10, Tucson

Hours: 9-7

Admission and parking: Free

Website: www.22ndstreetshow.com

Sponsored by: Eons Expositions

Dealers Contact: Christine - (516) 818-1228

Email: lowellcarhart@yahoo.com

February 9-12 - Tucson

58th Annual Tucson Gem & Mineral Show "Minerals of Arizona"

Tucson Convention Center

260 S. Church St., Tucson, 85701,

(520) 322-5773

Hours: February 9-11 - 10 a.m.-6 p.m.,

February 12 - 10 a.m. -5 p.m.

Website: www.tgms.org/2012show.htm

February 18-19 - Mesa

Apache Junction Rock & Gem Show

Skyline High School

845 South Crismon Road, Mesa, AZ, 85208

Hours: Sat. - 9 a.m.-5 p.m.;

Sun. - 10 a.m.-4 p.m.

Donation: Adults-\$3.00; Students \$1.00

with student card; Children free when

accompanied by an adult

Show Chairman: Kelly Iverson - (480) 325-2705

Publicity: Wally Frlich - (480) 982-7760

Dealers: Sharon Szymanski - (480) 671-6191

Proceeds go to scholarships for students of the high school, who are majoring in earth sciences.

NOTICE

The Earth Science Museum needs volunteers, especially those with marketing, sales, or science backgrounds. For further information, please contact Harvey Jong (harvey@digipan.com) or Shirley Cote, (602) 973-4291 or crystalc17@gmail.com.

FOR SALE

Hello, I have several hundred pounds of rough gemstones collected 30 yrs ago. All the gemstones I have are good grade gemstone material collected from Oregon, Wyoming, Ohio, and other places. I need to sell the gemstones and older equipment. I am located in central Phoenix. Also, have a small trim saw and new 10" lapidary saw blades and tumbled gemstones—just a lot of stuff.

Catherine Taylor
(602) 741-5903
ctaylor51@cox.net

REMINDER - 2012 Dues

If you have not yet paid your dues, the February newsletter will be the last one that you will receive. Please mail your dues to:

Lynne Dyer, Treasurer
P.O. BOX 30031
Mesa, AZ 85275-0031

Dues Rates:
Families & Couples: \$20.00
Single Adults: \$12.00
Juniors (under 18 yrs): \$2.50
Life Members
(Club Members for 25 yrs.):
No Charge

For a complete listing of all of the Tucson shows, go to:

<http://tucsongemandmineralshows.net/2012-tucson-gem-show.htm>

LOIS SPLENDORIA, EDITOR
MINERALOGICAL SOCIETY OF ARIZONA
P.O. BOX 30031
Mesa, AZ 85275-0031

Address Correction Requested



**EXCHANGE EDITORS - PLEASE
NOTE: New Return Address
Listed Above.**

First Class Mail

Mineralogical Society of Arizona
Founded 1935
A Non Profit Organization
www.mineralogicalsocietyarizona.org

Purpose: To promote popular interest in the various Earth Sciences, and particularly the fields of Geology, Lapidary, Mineralogy, and related subjects. ID badges are available from the Treasurer.

Meetings: 7:00 p.m. *on the second Thursday of the month, September through June, at the Church of the Beatitudes, 555 West Glendale Avenue, Phoenix, AZ, 85021.*

Dues: Families & Couples - \$20.00, Single Adults - \$12.00, Juniors (18 yrs. and under) - \$2.50. Please mail your dues to:

Lynne Dyer, Treasurer
P.O. BOX 30031
Mesa, AZ 85275-0031

Newsletter: Reprinting permission granted with proper credit given. Unless otherwise noted, articles are written by the Editor.



AFFILIATIONS



www.rmfmts.org

www.amfed.org